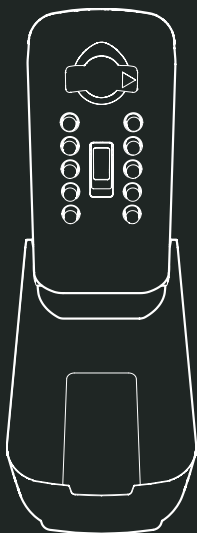


# **WOLFLOK PRO**



**Key lock box with illuminated multi-push  
buttons**

**Installation guide and instruction manual**

EN – Original instructions

# Contents

1	<b>Introduction</b>	<b>5</b>
1.1	Intended use	5
1.2	Used symbols	5
2	<b>Safety instructions</b>	<b>7</b>
3	<b>Specifications</b>	<b>9</b>
4	<b>Setting a code</b>	<b>10</b>
4.1	Choosing a code	11
4.2	Setting a code	11
4.3	Checking the code	17
5	<b>Installing on a wall</b>	<b>18</b>
5.1	XL Security Screws & Wall plugs - B1	20
5.2	Standard Security Screws – A10	23
5.3	Installing on wooden structures and substrates	26
6	<b>Using your Wolflok Pro</b>	<b>29</b>
6.1	Opening/unlocking	29
6.2	Closing/locking	32
7	<b>Maintenance</b>	<b>32</b>
7.1	Cleaning	32
7.2	Spare parts	33
7.3	Replacing the battery	34
8	<b>Disposal</b>	<b>39</b>
9	<b>Warranty</b>	<b>39</b>

## Installation guide and instruction manual

### Preface

Dear Valued Customer,

Thank you for purchasing the Wolflok Pro key lock box. This manual contains all the information to familiarise yourself with the product. We request that you read this manual carefully before you install and start using the product. This manual covers setting the code, installing the device and how to use it.

All images included in the manual are for reference only and may not fully represent the actual product. There may be variations in design or details.

### Contact information

Please keep this manual safe for future reference.

If you have any queries please contact us at:

**[www.wolflok.com](http://www.wolflok.com)**

[support@wolflok.com](mailto:support@wolflok.com)

*Wolflok Pro is designed and manufactured by Supra UK; includes Technology licensed from WKPE*

# Main parts

Image 1

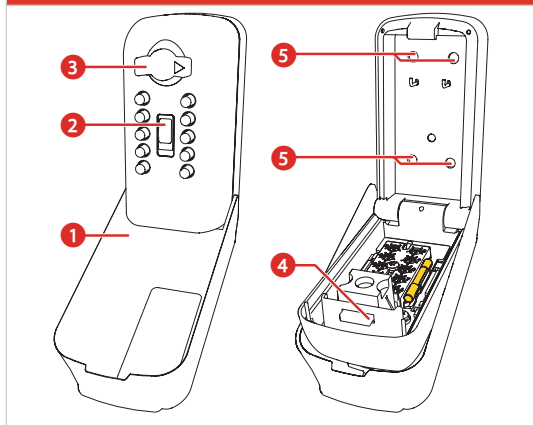
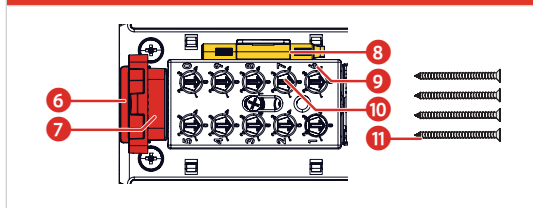


Image 2



1. Weather cover
2. Clear button
3. Open dial
4. Latch
5. Mounting holes

6. Battery cap
7. Light module
8. Code change tool
9. Code cover
10. Code dials
11. Standard security screws (×4), XL security screws & wall plugs (×4)

# 1 Introduction

## 1.1 Intended use

This product is a mechanical key lock box, preventing unauthorised individuals from easily accessing your belongings.







The code buttons are illuminated for use at night. They light up when the clear button is pressed. When the lock box is open there is an internal light in the vault.

Each button can be pressed up to 4 times giving 9.7 million possible codes. There is enough space for several keys and access cards.

The device must be installed as specified in this manual with the screws supplied otherwise the security accreditation may be invalid.

## 1.2 Used symbols

The following symbols are used throughout the manual, on the product or the packaging:

	This symbol indicates the clear button. Pressing this, resets the code from the mechanism and turns the illumination module on.
	This symbol indicates the 'directional arrow' which points to the lock and unlock position.
	This symbol indicates the key lock box 'unlock icon'.
	This symbol indicates the key lock box 'lock icon'.
	This symbol on the battery compartment indicates that the product <b>contains button/coin battery</b> . <b>Keep it out of reach of children.</b> If swallowed, seek immediate medical attention. Lithium button/coin cell battery can use severe or fatal injuries within 2 hours.
	This symbol indicates to keep the batteries out of reach from children.

**⚠️WARNING**

This product can expose you to chemicals including bisphenol A (BPA), which is known to the State of California to cause cancer, birth defects or other reproductive harm. For more information, go to:  
[www.P65Warnings.ca.gov](http://www.P65Warnings.ca.gov)

## 2 Safety instructions

### General

- Only use the Wolflok Pro as described in this manual.
- Do not use if visibly damaged.
- Battery can be easily changed by anyone, with no special skills required.
- Do not modify. Modification of the key lock box will void warranty.

### Installation

- Do not mount the Wolflok Pro within 150mm (6 inches) from the corner of a masonry surface.
- Make sure the Wolflok Pro is mounted flat to the surface and does not move.
- LPS (Loss Prevention Standards) 1175 focuses on the physical security of burglar resistant building components, including security enclosures, doors, windows, and key lock boxes. It ensures these products meet rigorous standards for protecting building exteriors and indoor areas. The higher the security rating under LPS 1175, the more robust the product is against potential attacks.
- Standard Screws are only installed into brick, concrete, flat stone or single skin walls to maintain the LPS1175 security certification A10.
- Make sure the XL Screws & Wall plugs are only installed directly in to brick, concrete, flat stone or rendered walls to maintain the LPS1175 security certification B1.

- B1 security rating is higher than A10 security rating.
- Installation on wood is possible, but please keep in mind that the key lock box's security depends on the strength of the surface it's mounted to.
- If installing on any kind of render or cladding please check the substrate behind to ensure you choose the right installation method.
- Do not install screws directly into mortar, as this will weaken the mounting.
- Do not reuse the screws when reinstalling. Visit your local supplier for replacements.
- For rendered surfaces the security approval covers render up to 20mm/0.8 inches thick.

**Note:** This equipment has been tested and found to comply with the limits for a Class B digital device, pursuant to Part 15 of the FCC Rules. These limits are designed to provide reasonable protection against harmful interference in a residential installation. This equipment generates, uses and can radiate radio frequency energy and, if not installed and used in accordance with the instructions, may cause harmful interference to radio communications. However, there is no guarantee that interference will not occur in a particular installation. If this equipment does cause harmful interference to radio or television reception, which can be determined by turning the equipment off and on, the user is encouraged to try to correct the interference by one or more of the following measures:

- Reorient or relocate the receiving antenna.



- Increase the separation between the equipment and receiver.
- Connect the equipment into an outlet on a circuit different from that to which the receiver is connected.
- Consult the dealer or an experienced radio/TV technician for help.

**Warning:** Changes or modifications to this unit not expressly approved by the party responsible for compliance could void the users authority to operate the equipment.

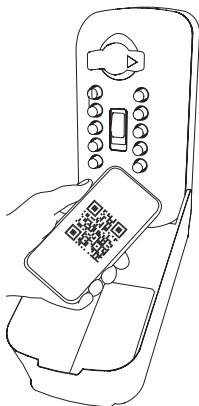
## 3 Specifications

Product	Wolflok Pro
Part number Wolflok Pro	960071
Inner dimensions (W × H × D)	55mm × 90.5mm × 19.5mm 2.1 × 3.6 × 0.8 inches
Dimensions (W × H × D)	85mm × 160mm × 75mm 3.3 × 6.2 × 2.9 inches
Weight	2.2 kg 4.85 lbs
Operating temperature	-30 °C – +50 °C -22 °F – 120 °F
Lock type	Combination key pad lock
Possible combinations	Over 9 million codes
Vault material	Zamak3 – zinc aluminium alloy

Screw type	4× Standard screws or 4× XL screws and wall plugs
Battery illuminated module	CR2032, 3V
Expected lifespan of the illuminated module battery	2 years, based on 4 uses per day. Recommended battery "Renata" CR2032 coin cell.
Attack Test standard LPS 1175 Issue 8	B1 using XL Security Screws & Wall plugs - WFK001FK  A10 using Standard Security Screws - WFK311

## 4 Setting a code

Scan QR code on the front of your key lock box for handy video resources.

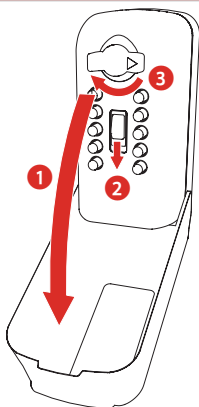




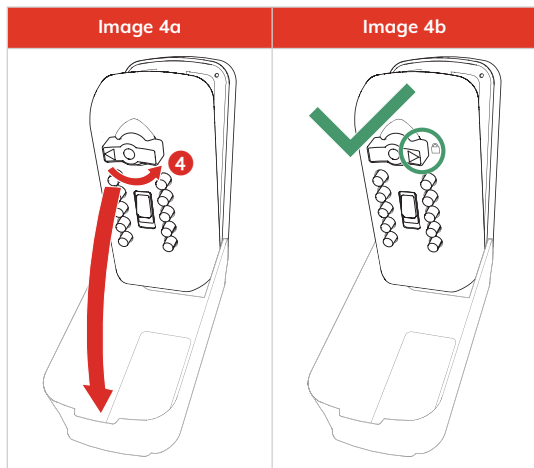
To set a code please follow the instructions below:

1. Open the weather cover (see **Image 3**).
2. If setting the code before installation on a wall you can remove the weather cover.
3. Pull down the clear button and release.
4. Rotate the open dial 180° clockwise to unlock the device.
5. Open the device.

**Image 3**



6. Rotate the open dial 180° anti-clockwise with the lid open to push the latch out (see **Image 4a**). The arrow on the front of the key lock box should point at the locked padlock symbol (see **Image 4b**).



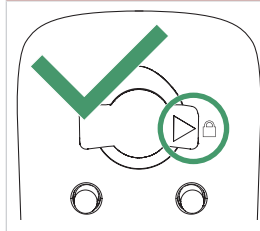
7. Make sure that the dial is turned fully 180 degrees anti-clockwise towards the locked padlock symbol to see the latch fully exposed (see **Image 5**).

**Image 5**

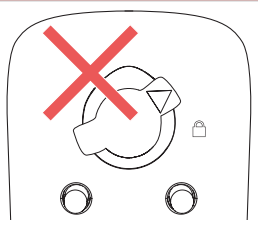


8. Slide the code cover towards the latch using your hands to see the code dials fully exposed.
- i** If the open dial is not rotated fully 180 degrees anti-clockwise towards lock symbol, **DO NOT** slide the cover as it will cause damage to your key lock box (see **Image 5a** and **Image 5b**).

**Image 5a**



**Image 5b**



9. Take out the code change tool (see **Image 6**).
10. Use the code change tool to turn the code dials of each digit to the number of times this digit is used in your code (see **Image 6a** and **Image 6b**).

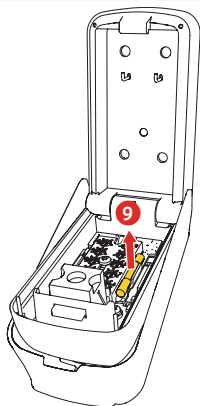
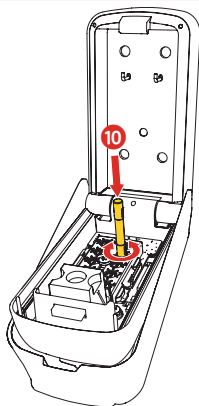
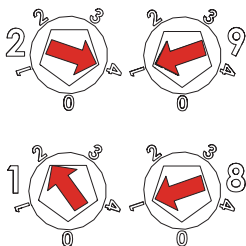
**Image 6****Image 6a**

Image 6b



Example of an 8 digit code where the number 2 is used 4 times.

Example code: 2212 1982

1 is used twice

2 is used 4 times

8 is used once

9 is used once

- ➔ set **code dial 1** to 2
- ➔ set **code dial 2** to 4
- ➔ set **code dial 8** to 1
- ➔ set **code dial 9** to 1

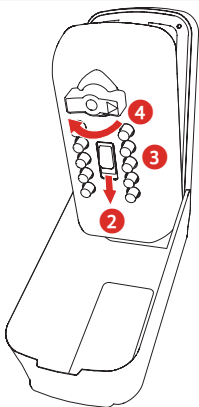
**⚠ Please make sure any digits NOT used in the code are set to '0'.**



### 4.3 Checking the code

1. Place the code change tool back.
2. Pull the clear button down and release (see **Image 7**).
3. Enter your code. Make sure the buttons click.
4. Rotate the open dial 180° clockwise to the unlock symbol.

Image 7



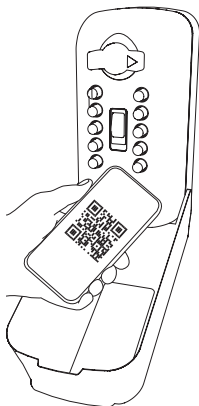
If the latch retracts, the code has been set correctly.

5. Hold the lid closed.
6. Rotate the dial 180° anti-clockwise to the locked symbol to lock the key lock box.

If the device has been locked correctly, you will hear a click.

## 5 Installing on a wall

Scan QR code on the front of your key lock box for handy video resources.



The Wolflok Pro can be installed in one of two ways.

- XL Security Screws & Wall plugs- 100mm/3.93 inches screws and wall plugs achieve B1 security approval against LPS1175 on brickwork, concrete or stone and on \*rendered walls, inclusive of render up to 20mm/0.75 inches deep. The screws and wall plugs may cause damage to a \*\*single skin wall. We highly recommend that you use the XL Security screws and wall plugs, if possible, to achieve the highest security certification.

- Standard Security Screws - 60mm/2.3 inches masonry screws achieve A10 security approval against LPS1175 on brickwork, concrete or stone. The screws are recommended to be used on \*\*single skin walls.

LPS1175 B1 security approval is the higher of the two options.

For installation on wood see chapter 5.3., we recommend using the standard screws.

Care should be taken if using XL Screws & Wall plugs- please ensure you have adequate depth for the longer holes. If you have cavity wall construction, please check there aren't any pipes, insulation or cables.

\* Rendered walls- the walls are covered by sand and cement, a lime based, or a synthetic resin based coloured render.

\*\* Single skin walls- the walls are made up of only one layer of brick. These will typically be garden or garage walls.

WFK001FK - XL Security Screws & Wall plugs

WFK311 - Standard Security screws

## 5.1 XL Security Screws & Wall plugs - B1

To mount the Wolflok Pro to a brick, rendered, and concrete wall, the following tools are needed:

**⚠ Do not use the screws to install the key lock box on a wooden wall or substrates.**

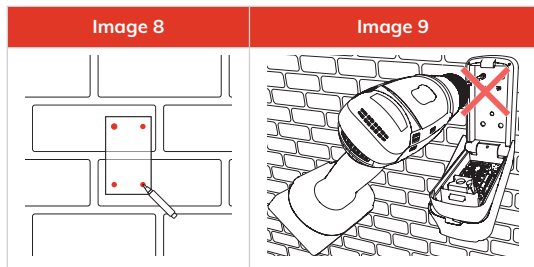
- Marking template (included)
- 8mm/ 5/16" masonry drill bit (at least 110mm/4.3 inches length)
- 4mm/ 5/32" masonry drill bit (for pilot holes, at least 110mm/4.3 inches length)
- Drill
- Marker pen or pencil
- T30 Torx screwdriver
- Spirit level
- Safety goggles (recommendation)
- Dustpan
- Brush
- Hammer

Hold the key lock box up to the brick where you would like to install the key lock box, ensure that the key lock box doesn't move or rock and is at least 150mm (6 inches) from an external corner. The key lock box must sit flat to the wall as this avoids the key lock box from warping.

Hold the marking template at the desired location on the wall and mark the holes on the surface (see **Image 8**).

- ⚠ Do not use the key lock box to mark/drill the holes as the unit will fill with brick dust and may fail to work (see Image 9).**

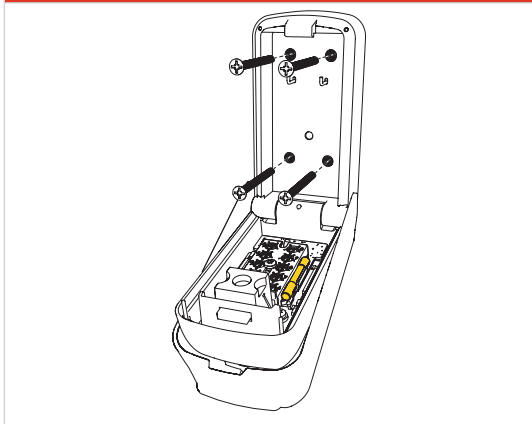
If installing on brick, try to ensure the holes line up with the horizontal centre of the surface of each brick, and not in the mortar line.



- Set the marking template aside.
- Mark up both of the drills to 110mm/4.3 inches in length.
- Put on eye protection.
- Using the 4mm/ 5/32" masonry drill bit, drill 4 pilot holes to 110mm/4.3 inches depth into the brick. Using the 8mm/ 5/16" masonry drill bit, drill the newly made pilot holes.
- Clean out dust and debris by blowing gently into the holes.
- Partially insert the screws into the wall plugs. The wall plugs should then be pressed firmly into the wall, the use of a hammer may be needed. The wall plugs should be flush with the wall.

- Remove screws using a T30 Torx screwdriver
- Place the Wolflok Pro over the holes.
- Use the four indicated screws (see **Image 10**).

**Image 10**



- Drive the Screws directly in to the wall using a T30 Screwdriver, a Ratchet or power tool can be used, however care must be taken not to overtighten the screws. Final tightening should be done by hand.
- Tighten the screws until the heads are snug against the back of the key lock box.

**⚠ Do not over-tighten the screws.**

- Pull down the clear button.
- Enter the code.
- Rotate the dial 180° anti-clockwise.
- Close the Wolflok Pro.
- Close the weather cover.

## 5.2 Standard Security Screws – A10

To mount the Wolflok Pro to a brick, rendered, and concrete wall, the following tools are needed:

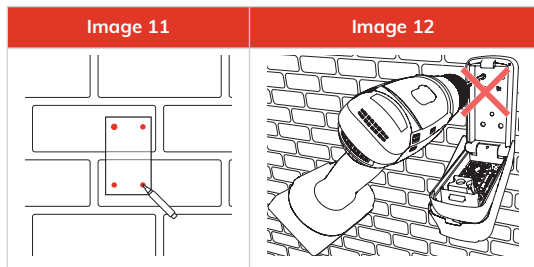
- Marking template (included)
- 5mm/ 3/16" masonry drill bit (at least 70mm/2.75 inches length)
- Drill
- Marker pen or pencil
- T30 Torx screwdriver
- Spirit level
- Safety goggles (recommendation)
- Dustpan
- Brush

Hold the key lock box up to the brick where you would like to install the key lock box, ensure that the key lock box doesn't move or rock and is at least 150mm (6 inches) from an external corner. The key lock box must sit flat to the wall as this avoids the key lock box from warping.

Hold the marking template at the desired location on the wall and mark the holes on the surface (see **Image 11**).

**⚠ Do not use the key lock box to mark/drill the holes as the unit will fill with brick dust and may fail to work (see Image 12).**

If installing on brick, try to ensure the holes line up with the horizontal centre of the surface of each brick, and not in the mortar line.

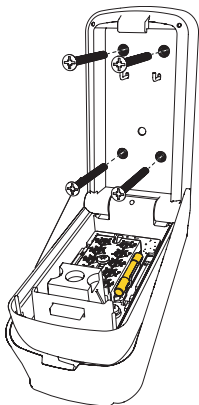


- Set the marking template aside.
- Mark up the drill to 70mm/2.75 inches in length.
- Put on eye protection.
- Drill four pilot holes to a depth of at least 70mm/2.75 inches. Failure to drill deep enough can result in a snapped screw.
- Clean out the dust and debris from the holes by blowing gently into the holes.
- Place the Wolflok Pro over the holes.



- Use the four Standard Security screws, included (see **Image 13**).

Image 13



- Drive the screws directly into the brick using a T30 Torx screwdriver. **Do not use power tools.**
- Tighten the screws until the heads are snug against the back of the key lock box.
- ⚠ **Do not over-tighten the screws.**
- Close the Wolflok Pro.
- Close the weather cover.

## 5.3 Installing on wooden structures and substrates

LPS (Loss Prevention Standards) 1175 focuses on the physical security of burglar resistant building components, including security enclosures, doors, windows, and key lock boxes. It ensures these products meet rigorous standards for protecting building exteriors and indoor areas. The higher the security rating under LPS 1175, the more robust the product is against potential attacks.

Installation on a solid wooden structure is possible using the standard screws provided and guidance below, it should be noted the LPS 1175: Issue 8 approval of the key lock box does not currently include installation onto wood.

To mount the Wolflok Pro to a wooden surface or substrate, the following tools are needed:

- Marking template (included)
- 4mm or 5/32" drill bit (at least 70mm/2.75 inches length)
- Drill
- Marker pen or pencil
- T30 Torx screwdriver
- Spirit level
- Safety goggles (recommendation)
- Dustpan
- Brush

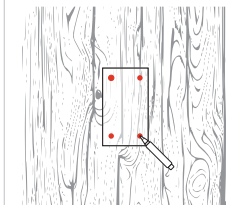
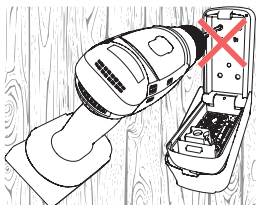
**⚠ Ensure that the installation substrate is at least 25mm (1 inch) thick, ideally 60mm (2.5 inches) or more.**

- ❗ If installing on thin walls be aware the screws may protrude through the back side.
- ❗ Install the key lock box where possible into a stud.

Hold the key lock box against the surface where you plan to install it. Make sure it sits flat to the wall and is at least 25mm (1 inch) away from the edge of the surface.

Hold the marking template at the desired location on the wooden wall and mark the holes on the surface (see **Image 14**).

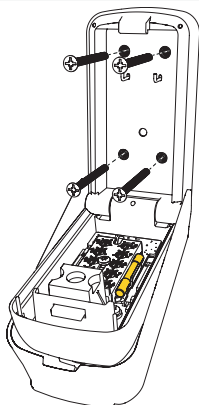
Do not use the key lock box to mark/drill the holes as the unit will fill with dust and may fail to work (see **Image 15**).

**Image 14****Image 15**

- Set the marking template aside.
- Mark up the drill to 70mm/2.75 inches in length.
- Put on eye protection.

- Drill four pilot holes to a depth of at least 70mm/2.75 inches. Failure to drill deep enough can result in a snapped screw.
- Clean out the dust and debris from the holes by blowing gently into the holes.
- Place the key lock box over the holes.
- Use the four Standard Security screws, included (see **Image 16**).

**Image 16**



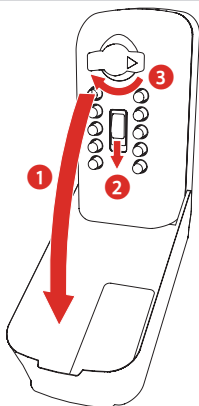
- Drive the screws directly into the wood using a T30 Torx screwdriver. **Do not use power tools.**
  - Tighten the screws until the heads are snug against the back of the key lock box.
- ⚠ Do not over-tighten the screws.**
- Close the key lock box.
  - Close the weather cover.

## 6 Using your Wolflok Pro

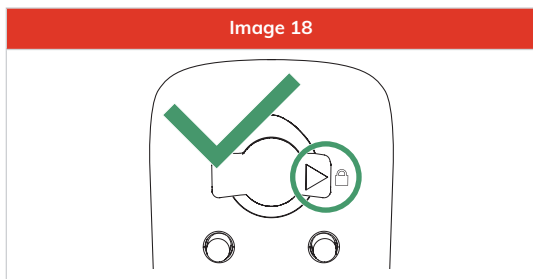
### 6.1 Opening/unlocking

1. Open the weather cover (see **Image 17**).

Image 17

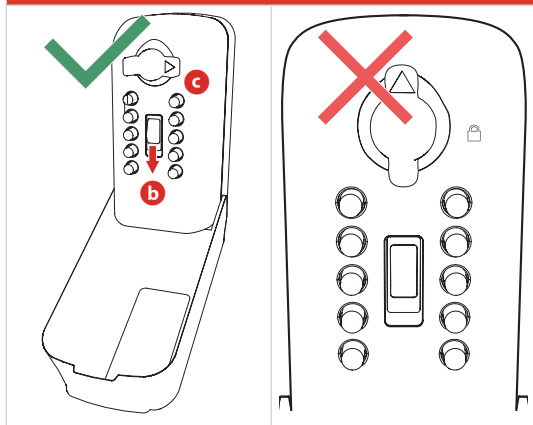


2. Ensure the arrow is pointing at the locked symbol (see **Image 18**).



3. Pull down the clear button.
4. Enter your code.
5. Rotate the open dial 180° clockwise towards the unlock symbol to open.
6. Open the key lock box.

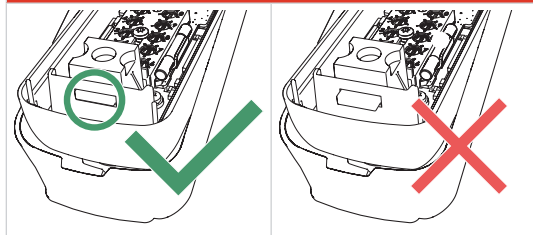
7. If the key lock box doesn't open:
- Check you have the correct code.
  - Clear any previous attempts by pressing down the clear button.
  - Ensure the arrow is pointing at the locked symbol.
  - Try again (see **Image 19**).

**Image 19**

## 6.2 Closing/locking

1. Make sure that the latch is not out (see Image 20).

Image 20



2. Close the lid.
3. Rotate the open dial 180° anti clockwise to lock.

If the device has been locked correctly, you will hear a click.

## 7 Maintenance

### 7.1 Cleaning

Clean the exterior with a damp cloth and mild detergent.

Clean the interior with a dry cloth only.



## 7.2 Spare parts

Spare parts are available, such as weather covers and fixings, if your product needs to be moved. See the table below for an overview of common spare parts.

Name	Part number
Weather cover	910007
Fixings - Wolflok Pro	A10 using Standard Security Screws - WFK311 B1 using XL Security Screws & Wall plugs - WFK001FK

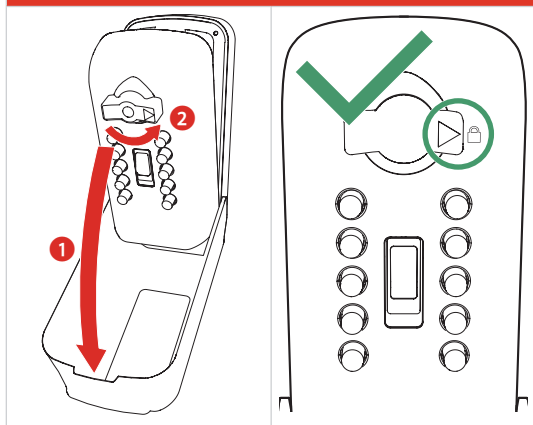
Replaceable battery illumination module	910006
Marking template	WFK303R1
5mm/ 3/16" masonry drill bit + T30 screwdriver for fixing Standard Security Screws	AP001
8mm/ 5/16" masonry drill bit + 4mm/ 5/32" masonry drill + T30 torx screwdriver bit for fixing XL Security Screws & Wall plugs	AP003

For customer service and support please contact your local supplier.

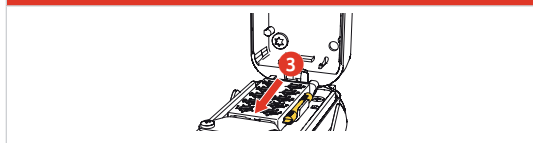
## 7.3 Replacing the battery

- i** Ensure the battery is installed correctly according to polarity (+ and -).
  - i** Do not mix old and new batteries, different brands or types of batteries, such as alkaline, carbon-zinc, or rechargeable batteries.
  - i** Remove and immediately recycle or dispose of batteries from equipment not used for an extended period of time according to local regulations.
  - i** Always completely secure the battery compartment. If the battery compartment does not close securely, stop using the product, remove the batteries, and keep them away from children.
- 1.** Open the key lock box.

2. Rotate the dial 180° anti-clockwise so the dial is pointing at the locked icon (see **Image 21**).

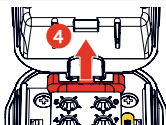
**Image 21**

3. Slide the code box towards the latch (see **Image 22**).

**Image 22**

4. Gently pull the light module out (see **Image 23**).

**Image 23**



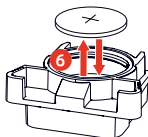
5. Use a coin to rotate the battery cap 180 degrees anti-clockwise (see **Image 24**).

**Image 24**



6. Replace the battery. The + symbol should face outwards (see **Image 25**).

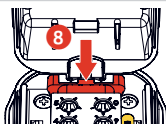
**Image 25**



7. Insert the battery cap and rotate the battery cap 180° clockwise. Close tightly to ensure waterproof seal (see **Image 26**).

**Image 26**

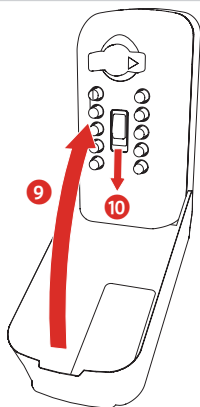
8. Push the light module back into place (see **Image 27**).

**Image 27**

9. Close the key lock box.

10. Press the reset button down to test the light module (see **Image 28**).

Image 28



## **⚠️ WARNING**

- **INGESTION HAZARD:** This Product contains a button cell or coin cell battery.
- **DEATH** or serious injury can occur if ingested.
- A swallowed button cell or coin battery can cause **Internal Chemical Burns** in as little as **2 hours**.
- **KEEP** new and used batteries **OUT OF REACH of CHILDREN**.
- **Seek immediate medical attention** if a battery is suspected to be swallowed or inserted inside any part of the body.



- Remove and immediately recycle or dispose of used batteries according to local regulations

and keep away from children. Do NOT dispose of batteries in household trash or incinerate.

- Even used batteries may cause severe injury or death.
- Call a local poison control center for treatment information.
- The compatible battery type CR2032.
- The nominal battery voltage: 3V.
- Non-rechargeable batteries are not to be recharged.
- Do not force discharge, recharge, disassemble, heat above 70 °C/158 °F or incinerate. Doing so may result in injury due to venting, leakage or explosion resulting in chemical burns.

## 8 Disposal

Please follow the locally applicable guidelines if exist when disposing of the packaging materials, key lock box, battery and light module.

## 9 Warranty

We offer a 2-year warranty on the Wolflok Pro including the illumination module. However if you register the product on our website, this can be extended to 5 years for mechanism only. Please ensure product is installed and used as described in this manual to preserve the warranty. Please refer to T&C on our website **[www.wolflok.com](http://www.wolflok.com)** for further information.

## Granted patents

<b>Territories</b>	<b>Patent number</b>
United Arab Emirates	5567
Europe (AT BE CH DE DK ES FR GB IE IT LU LI NL NO SE)	3 241 960
Europe (AT BE CH DE DK ES FR GB IE IT LU LI NL NO SE)	3 404 173
Australia	2017260052
New Zealand	748525
China	ZL201780038224.3
Hong Kong	HK1240992
India	456239
USA	10 047 542
USA	10 718 136



## Pending applications

EN

<b>Territories</b>	<b>Patent number</b>
Canada	3 022 692
South Africa	2018/07209
Australia	2022369450
Canada	3 235 881
Europe (AL, AT, BE, BG, CH, CY, CZ, De, DK, EE, ES, FI, FR, GB, GR, HR, HU, IE, IS, IT, LI, LT, LU, LV, MC, ME, MK, MT, NL, NO, PL, PT, RO, RS, SE, SI, SK, SM, TR)	22793455.1
United Kingdom	2115283.0
USA	Patent pending

This page is intentionally left blank.

This page is intentionally left blank.



[www.wolflok.com](http://www.wolflok.com)  
[support@wolflok.com](mailto:support@wolflok.com)